



Semydvir

## THE CLUB APARTMENTS IN THE CARPATHIANS





## The tourist scheme

Lviv region is famous for its reach recreation – health-improving resources.

The unique joining of historical and architectural monuments and wonderful nature makes this region attractive for tourists and holidaymakers.

The club apartments “Semydvir” is located in the picturesque part of the Carpathian Mountains, in the village Slavske on the bank of crystal clear river.



Distance to Kyiv- 600 km

Distance to Lviv- 140 km

Distance to the railway station Slavs'ke- 900 m







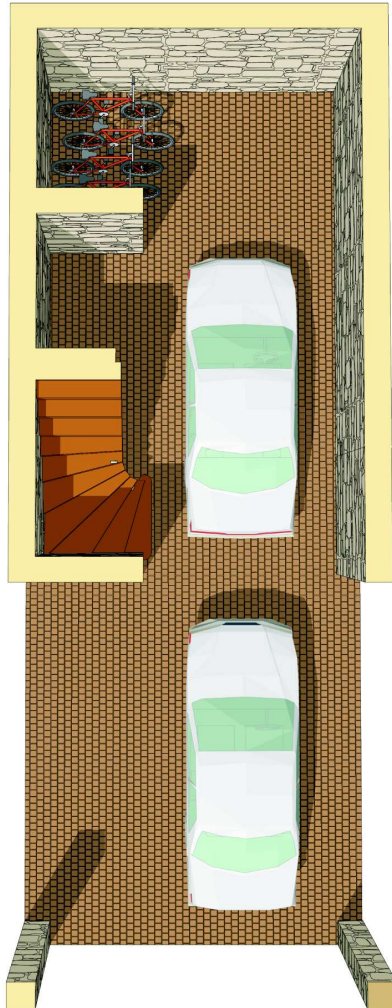


## The general plan





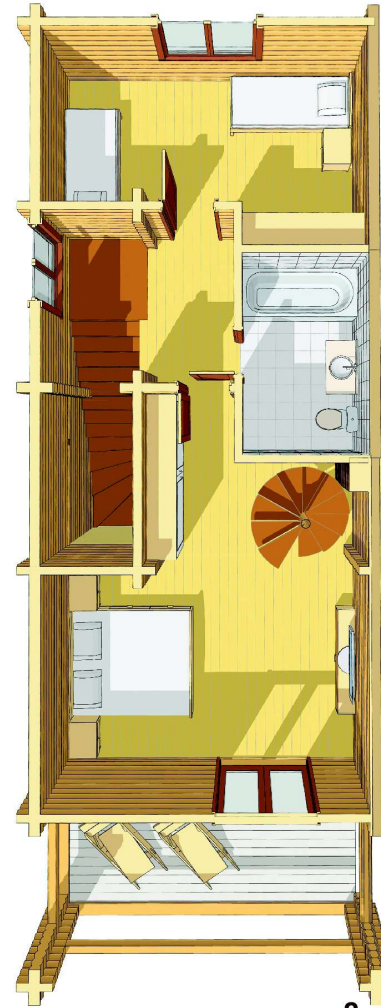
**The first level**



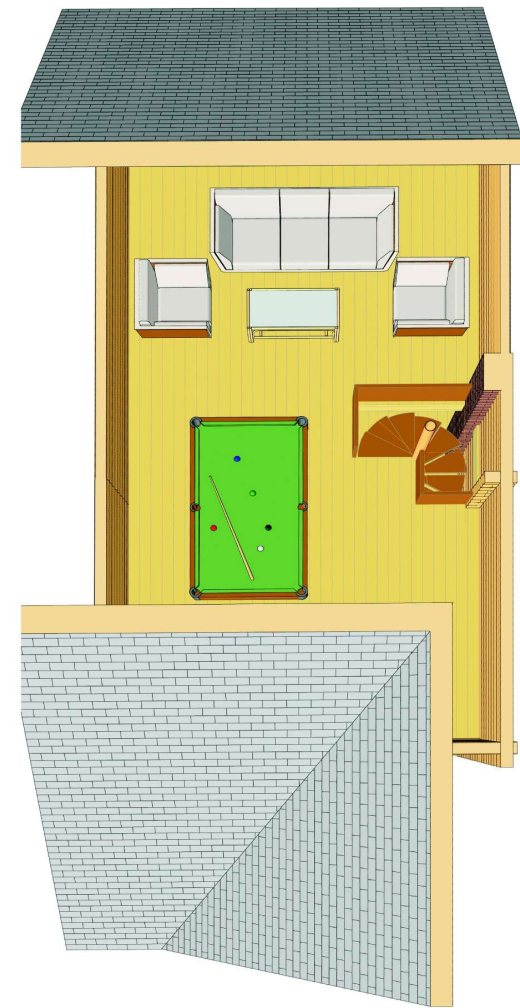
**The second level**



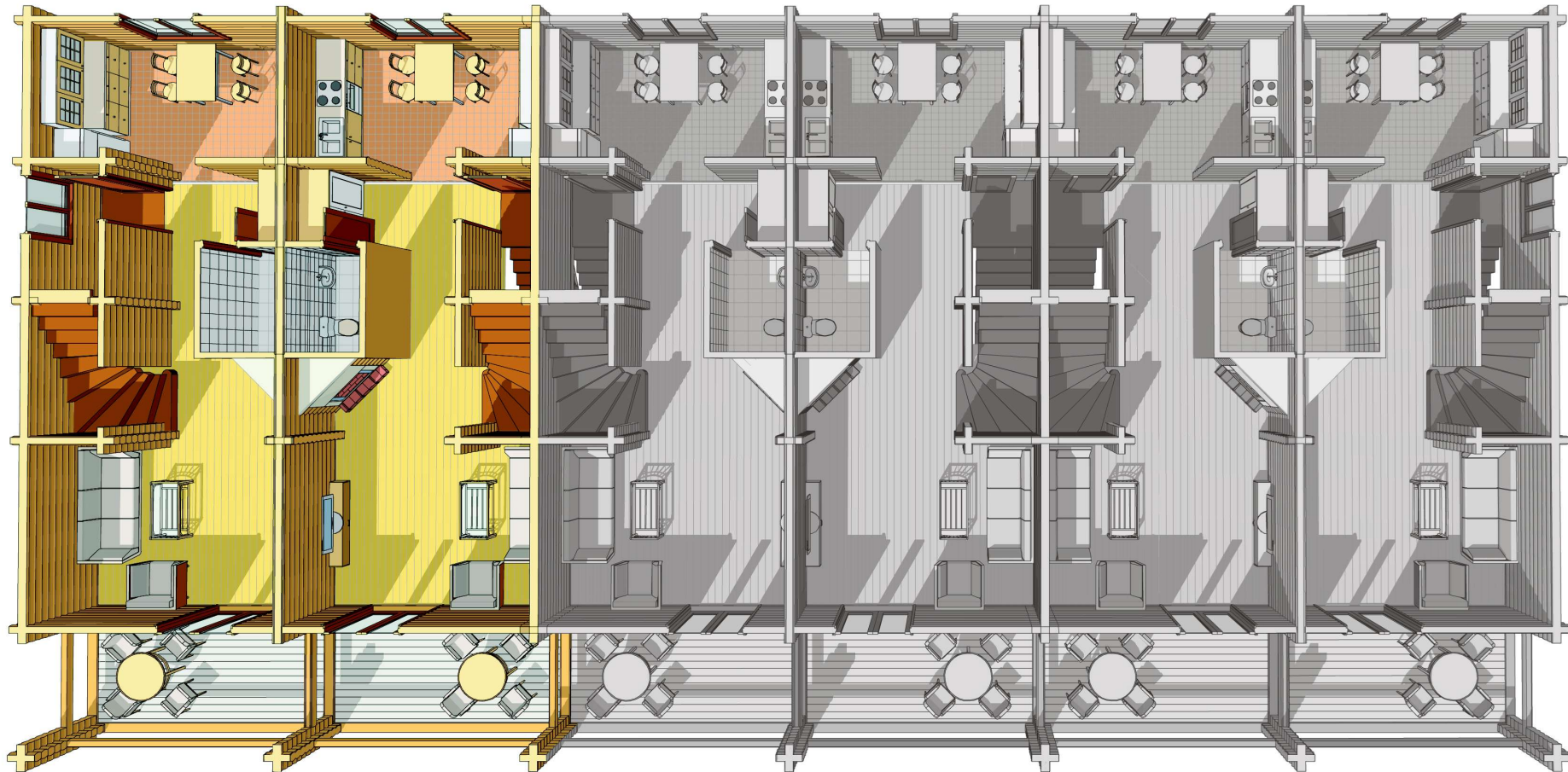
**The third level**



**The garret**



The total square of one section is 230 m<sup>2</sup>



The planning of apartments forseees the possibility of joining two sections in one apartment of total square of 460m<sup>2</sup>





The project solution





